

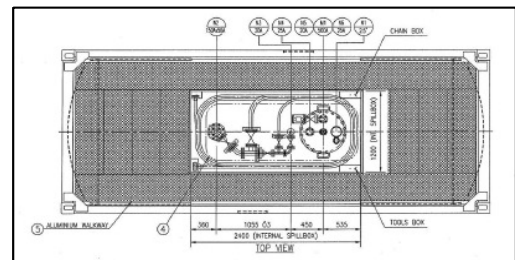


TEFLON LINED TANKS

ZZTC can arrange to have tanks lined with Teflon in Japan or Taiwan. These tanks are a must for Corrosive Cargo like Hydrofluoric acid (HF) and Nitric Acid.

20' x 8' x 8' 6" 304 Full frame Collar type UN Portable Tank Type T14 with Teflon Lining

Capacity	17.5 CBM	
MAGW	36,000 KG	
Tare	4,500 KG	
Working Pressure	4 Bar	58 Psi
Design Temperature	-40 C to 93 C	-40 F to 200 F
Material	ASTM A240 SS304 or eq.	
Design Code	ASME VIII, Div. 1 where applicable and IMDG T11, US Dot, CFR 49, ADR, RID , UIC, CTC, AAR, CSC, TIR, ISO	



Fittings

Manlid	1 x 500 mm 20 pt flat bolted manlid
Relief Valve	1 x 2.5" BSP Relief Valve with adaptor and bursting disc
Airline	1 x 0.75" PFA Lined Ball valve connected to N2 Purge System with 20A Hose for Air Inlet
Vent and Filter Provision	1 x 25A JIS 10K Flanged Provision for Vent and Filter
Thermal Sensor Assembly	1 x 1" Thermal Sensor on a 20A JIS 10K pad
Spare Provision	1 x 20A JIS 10K with Blind Flange
Top Liquid Assembly	1 x 150A JIS 10K pad adapted for 2" PFA Lined 304 Ball Valve connected to N2 Purge System with 40A Hose for liquid discharge



Insulation	50 mm thick mineral wool with density of 50 KG / m3 covered 1.8mm white GRP cladding
Walkway	"FULL" Style Marine Grade Aluminium Q grating with ladder on the right
Teflon Lining	Lined with 3mm modified PTFE TFN
Options	
Baffle	Install Japanese style FULL baffle
Cladding	Aluminium or Stainless Steel Cladding